

# SINGLE-ACTING RETURN-SPRING CYLINDERS WITH EXTERNAL SMOOTH BODY AND SMOOTH THROUGH HOLE

## SERIES 21



Single-acting return-spring cylinders. The external body is smooth with a smooth through hole allowing the insertion of supporting pins or tie rods. They come in 5 different models and can be used with oil only.



### APPLICATIONS

Due to their exceptional force, they are used for their thrust function. They can be mounted in any position on multiple units and are used to lock large parts in position. Possible applications are for riveting, bending, marking, pressing, shearing, punching, drawing and upsetting. For punch recall, add springs or other fixtures on the outside. Use the holes in the base to fix the cylinders.

#### IMPORTANT:

Do not operate the cylinders to the end-of-stroke position.

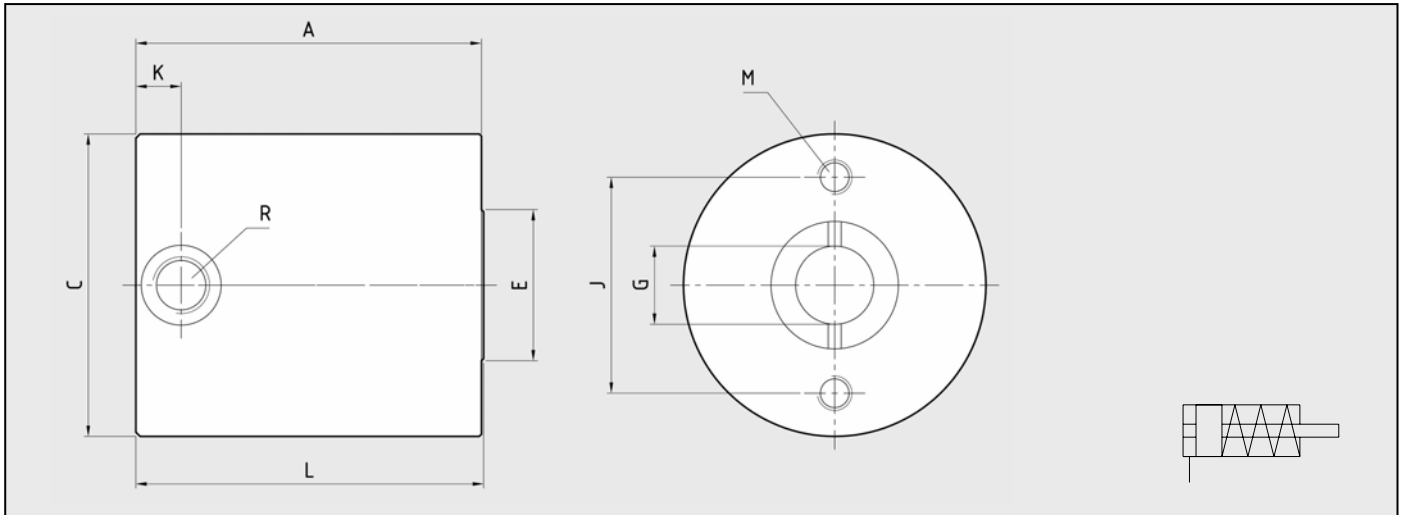
### KEY TO CODES

Z52	21	50	40	06
	SERIES	EXTERNAL DIAMETER	BORE	STROKE (mm)
	21	50	40	06
		70	57	06
		85	70	12

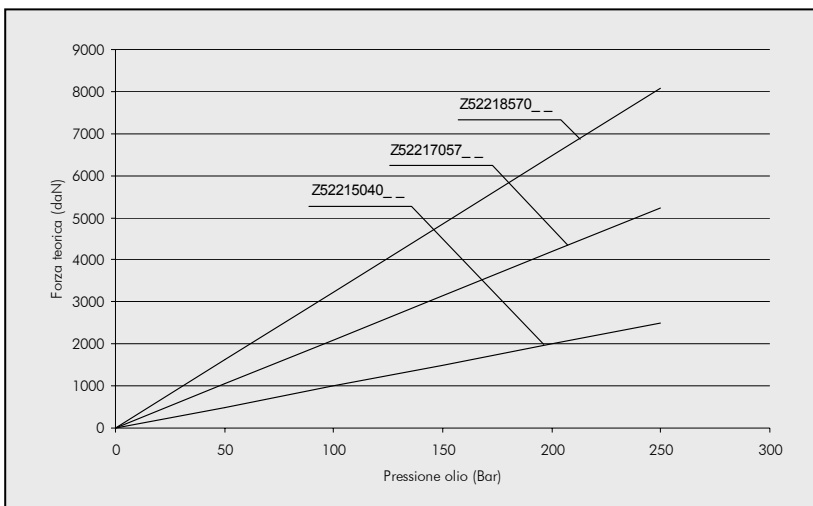
# SINGLE-ACTING RETURN-SPRING CYLINDERS WITH EXTERNAL SMOOTH BODY AND SMOOTH THROUGH HOLE SERIES 21



## CHARACTERISTICS AND DIMENSIONS



ITEM CODE	FORCE (daN)		SURF. AREA (cm <sup>2</sup> )	VOLUME (cm <sup>3</sup> )	STROKE (mm)	DIMENSIONS (mm)								
	150 BAR	240BAR				A	C	E	G	J	K	L	M	R(Oil inlet)
Z5221504006	153	252.5	10.02	6.01	6	50	50	24	12	35	8	50.5	M6 x 9	1/8G
Z5221705706 Z5221705712	320.5	534	20.97	12.36 24.72	6 12	52 80	70	35	18	50	8.5 10.5	52.5 80.5	M8 x 10	1/8G 1/4G
Z5221857006 Z5221857012	494	823.5	32.33	19.39 38.76		62 80	85	40	20		10.5	62.5 80.5		1/4G



FORCE/PRESSURE DIAGRAM  
SERIES 21